

Powered by



**egypt  
facility  
management  
forum. 7<sup>th</sup>**



**12<sup>th</sup> & 13<sup>th</sup> MAY 2026  
KEMPINSKI HOTEL  
NEW CAIRO**

Leading Healthcare Ecosystem Through Medical Asset Governance

Dr. Ahmed Abdelhamid Torki

Vice Chairman

Egyptian Biomedical Engineering Society (EBMES)

## Dr. Ahmed Abdelhamid Torki

Strategic Advisor for Medical Asset Management & Governance  
Ph.D. Biomedical Engineering & System, Cairo University

- Consultant, Medical Assets Planning & Procurement & Commissioning at AlOrman Association & Shefaa Orman Hospitals
- Visiting Lecturer International Transport and Logistics Institute, Arab Academy for Science, Technology and Maritime Transport (AASTMT )
- Vice Chairman, Egyptian Biomedical Engineering Society (EBMES)
- Board Member Arab Asset, Facility and Maintenance Management Council (OMAINTEC)



جمعية  
الأورمان





## Healthcare Technologies

Technologies directly related to patient care, diagnosis, treatment, monitoring, and clinical decision support



## Operational Technologies

Technologies that support infrastructure, logistics, and safety of healthcare facilities, not directly clinical



# Medical Assets



# Challenges Facing the Healthcare Ecosystem Related to Medical Assets



**CLINICAL  
ALIGNMENT**



**AVAILABILITY &  
ACCESSIBILITY**



**RELIABILITY &  
ACCURACY**



**RISK, SAFETY &  
COMPLIANCE**



**USER COMPETENCY  
& SUPPORT**



**LIFECYCLE  
SUSTAINABILITY**



**DIGITAL INTEGRATION,  
TRANSFORMATION &  
DATA PROTECTION**



# The Evolution of Medical Asset Management

## WHAT?



Enabling Resilient,  
Agile, and Sustainable  
Healthcare Ecosystems



RESILIENT



AGILE



SUSTAINABLE

Building healthcare ecosystems  
that deliver safe, high-quality,  
and sustainable care.

## WHY?



To Address  
VUCA Challenges



VOLATILITY



UNCERTAINTY



COMPLEXITY



AMBIGUITY

Adapting and strengthening  
healthcare systems to thrive in an  
unpredictable, complex, and  
rapidly changing world.

## HOW?



Through the Transformation  
from Traditional  
Maintenance-Oriented  
Management to Integrated  
Governance Frameworks



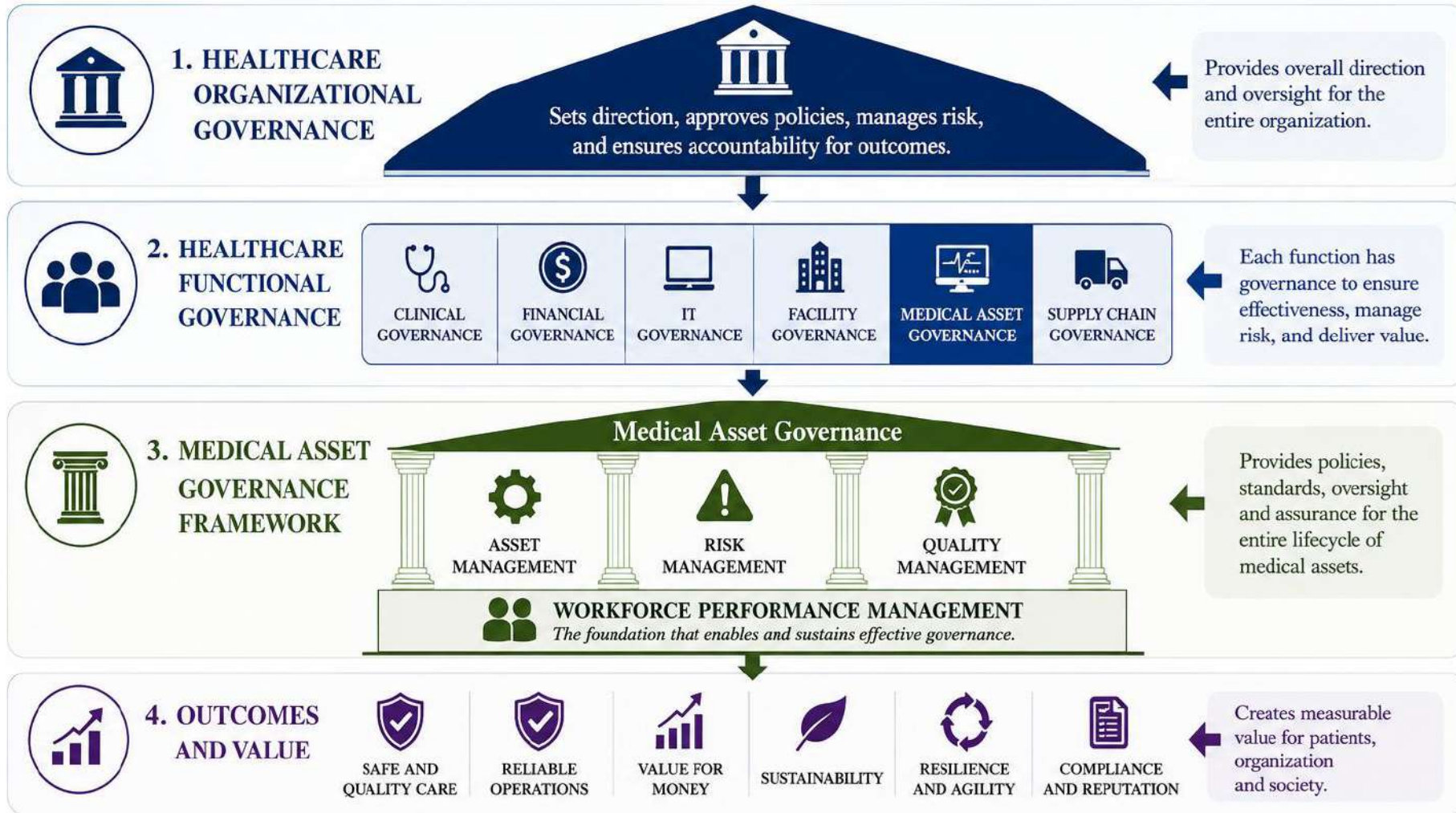
TRADITIONAL  
MAINTENANCE-ORIENTED  
MANAGEMENT



INTEGRATED  
GOVERNANCE  
FRAMEWORKS

Moving from reactive maintenance  
to proactive governance that optimizes  
value, performance, and outcomes.

# Medical Asset Governance



Medical Asset Governance is an integral part of Healthcare Organizational Governance, ensuring that medical assets are governed strategically to support safe, effective, efficient and sustainable healthcare.



# Transforming Medical Asset Management



# Transforming Medical Asset Management: Objective



## VALUE

- Reliable Clinical Impact
- Return on Investment



## SAFETY

- Protecting Patient and Staff
- Protecting Patient Data



## SUSTAINABILITY

- ESG Impact  
(Environmental,  
Social, Governance)



# Pillars of Medical Asset Governance



# Medical Asset Lifecycle Management

## Asset Introduction



### 1 ASSET INTRODUCTION

*Bringing the medical asset into the healthcare facility*

01



#### Planning

Define needs, assess requirements and plan for optimal outcomes.

02



#### Acquisition

Select the right asset through a transparent and value-based process.

03



#### Delivery & Incoming Inspection

Verify delivery and inspect for quality, completeness and conformity.

04



#### Inventory & Documentation

Record, tag and document asset information accurately for traceability.

05



#### Installation, Commissioning & Acceptance

Install, test, commission and formally accept for safe operational use.

# Medical Asset Lifecycle Management

## Asset Utilization



## 2 ASSET UTILIZATION & SUSTAINMENT

*Operating the asset in the healthcare facility until end of life*

01



### Training of Users & Operators

Ensure users and operators are competent and confident to operate the asset safely and effectively.

02



### Monitoring of Use & Performance

Continuously monitor utilization and performance to ensure optimal availability, safety and effectiveness.

03



### Maintenance

- Preventive maintenance
- Predictive maintenance
- Corrective maintenance

Ensure reliability, safety and extend useful life.

04



### Replacement or Disposal

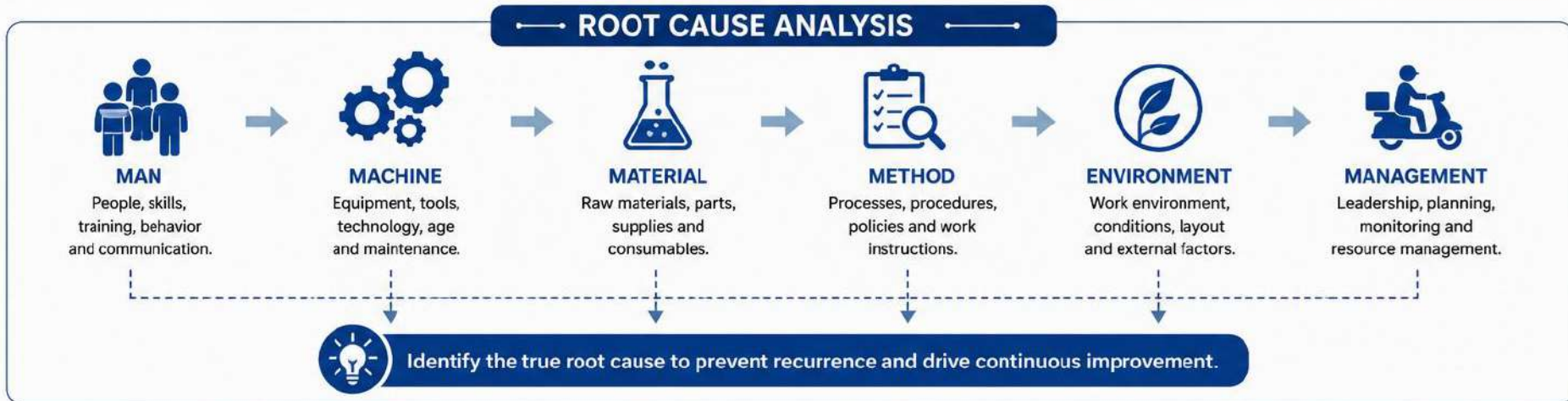
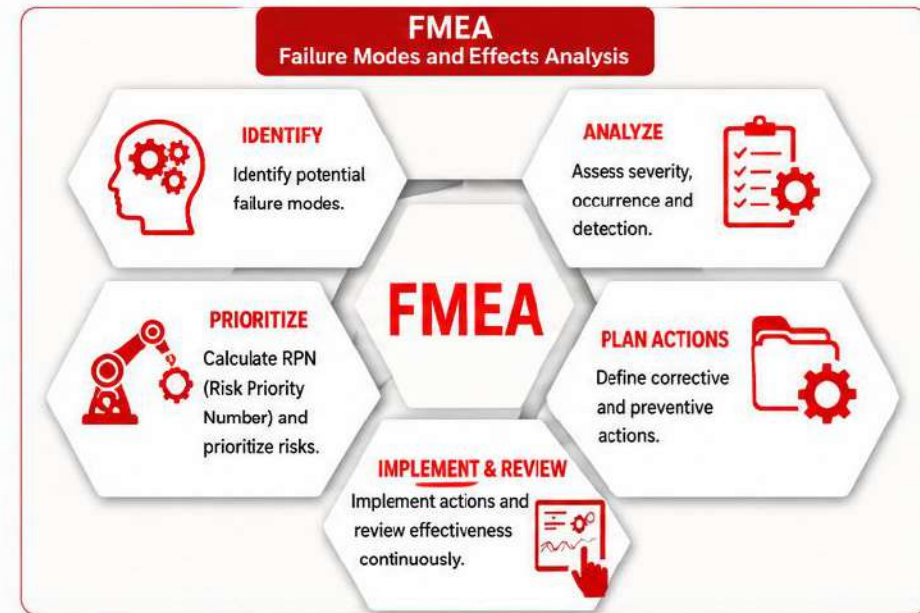
Replace at the right time or dispose responsibly at end of life in an economical and environmentally sound manner.



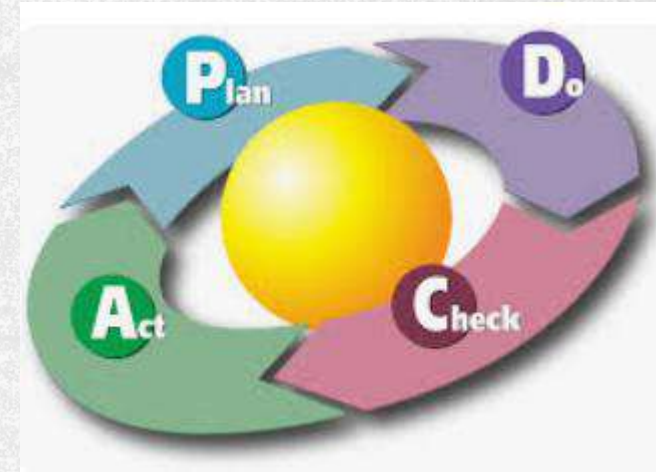
# Risk Management

RISK ASSESSMENT MATRIX				
SEVERITY \ PROBABILITY	Catastrophic (1)	Critical (2)	Marginal (3)	Negligible (4)
Frequent (A)	High	High	Serious	Medium
Probable (B)	High	High	Serious	Medium
Occasional (C)	High	Serious	Medium	Low
Remote (D)	Serious	Medium	Medium	Low
Improbable (E)	Medium	Medium	Medium	Low
Eliminated (F)	Eliminated			

■ High   
 ■ Serious   
 ■ Medium   
 ■ Low   
 ■ Eliminated



# Quality Management



GAHAR Handbook for

HOSPITAL  
ACCREDITATION STANDARDS

Safe medical equipment

EFS.10 GSR.27 Medical equipment plan ensures selection, inspection, testing, maintenance, and safe use of medical equipment.



## Facility Management and Safety (FMS)



# Workforce Performance Management



**COMPETENT  
WORKFORCE**



**CONTINUOUS  
LEARNING**



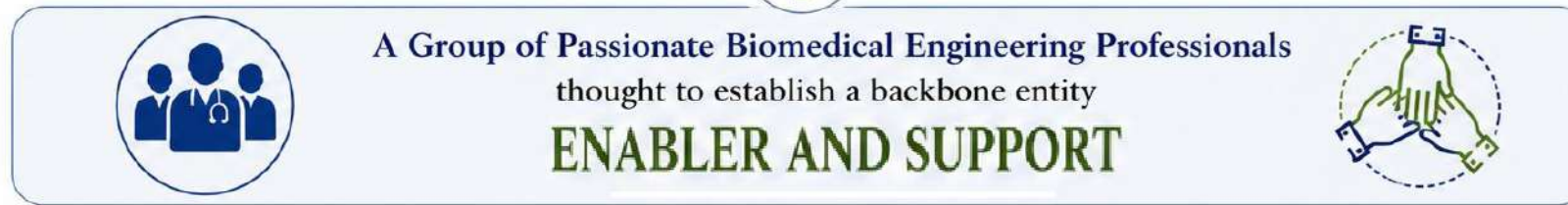
**PERFORMANCE  
EXCELLENCE**



**ACCOUNTABILITY  
& ENGAGEMENT**



**CULTURE OF  
EXCELLENCE**





# Challenges and Concerns Limiting FM Companies Involvement in Medical Asset Maintenance

**Your  
participation  
matters**





egypt  
facility  
management  
forum. 7<sup>th</sup>

# THANK YOU

